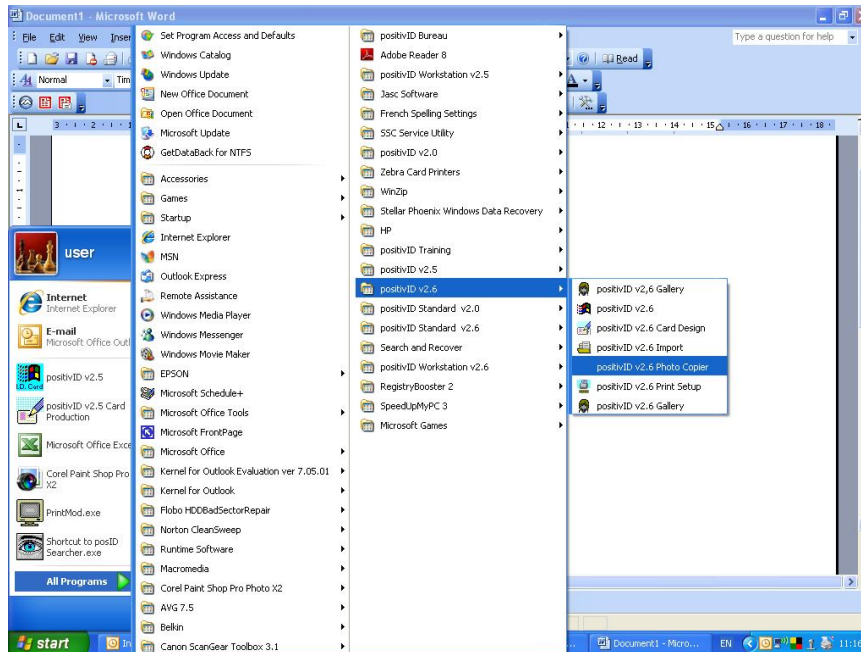


positivID Instruction Sheet – Exporting Photos from positivID

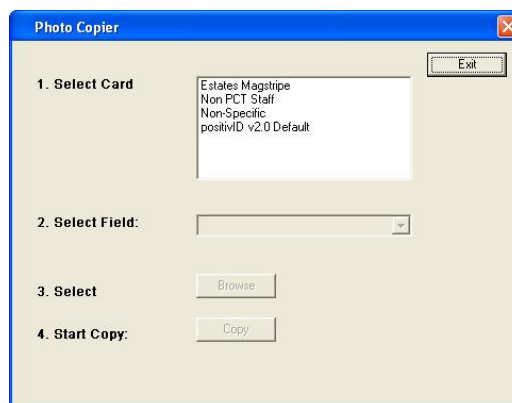
Part I – Using positivID Photo Copier.

1. The positivID Photo exporter program is located in the positivID program group and is called “positivID v2.x Photo Copier”:



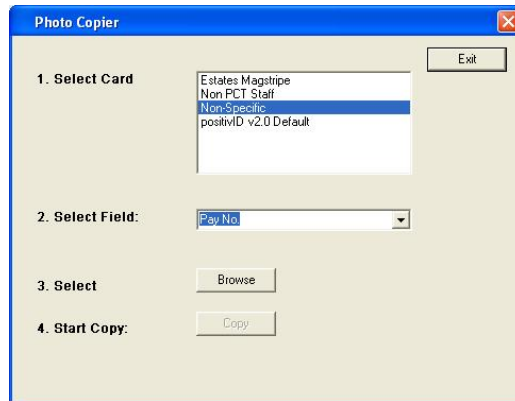
2. Ensure that the folder where you would like the pictures to be stored exists or create a new folder in the desired location (For example: C:\Temp\Exported_Pictures). This can be a on across a network if required, but you will need to be able to access this folder from the computer running positivID.

3. When clicked the following screen appears:

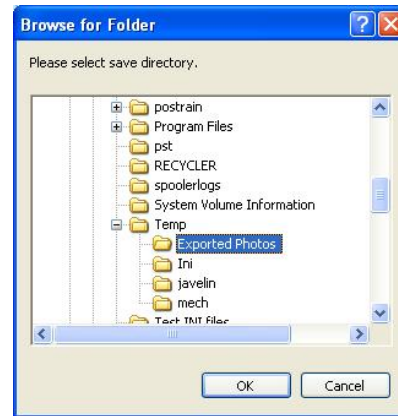
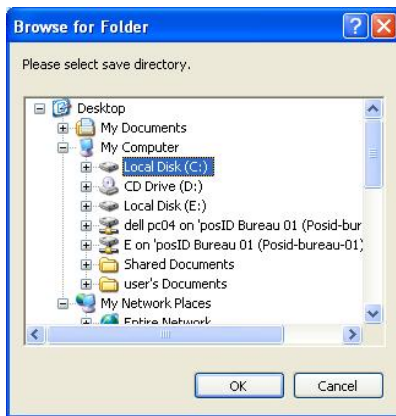


1st – Select the card design whose pictures you would like to export.

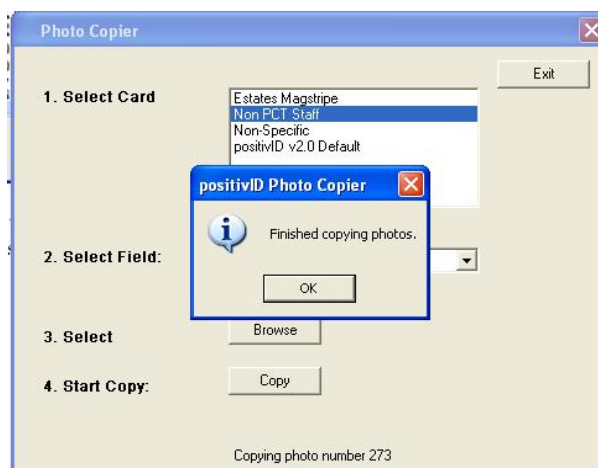
2nd – Select the field that corresponds to the names you want to give the pictures, for example “Pay No”:



3rd – Select where you would like the pictures to be saved and then press OK:

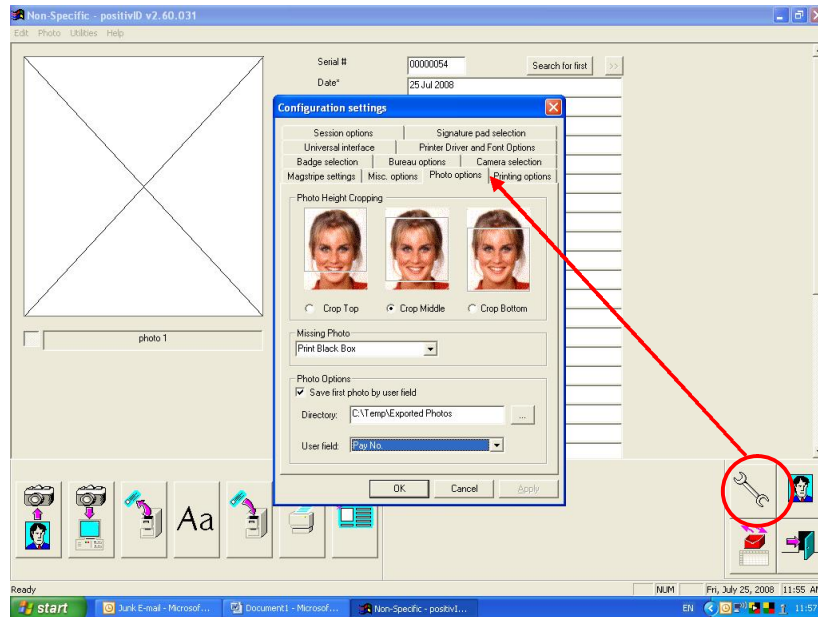


4th – Press the ‘Start Copy’ button. The program will start copying all the pictures to the selected destination (an on-screen counter will show you the progress). You will be informed when the process is complete:



Part 2 – Exporting individual pictures as they are captured.

1. Run the main positivID Workstation program and press the spanner button to display the configuration settings:



2. Select the 'Photo Options' tab. There is now a Photo Options frame at the bottom of the box. Click in the check box to select 'Save first photo by user field'. Select the directory you'd like the pictures saved to. Finally select the user field you'd like to use for the pictures filename:



3. Now, whenever a new record is created and saved, a copy of the picture will be saved to specified directory with a filename corresponding to the selected user field. Pictures are saved in .JPG format.